

CASE REPORT

Open Access

A rare presentation of atypical demyelination: tumefactive multiple sclerosis causing Gerstmann's syndrome

Sharmilee Gnanapavan^{1,2†}, Zane Jaunmuktane^{3†}, Kelly Pegoretti Baruteau⁴, Sakthivel Gnanasambandam⁴ and Klaus Schmierer^{1,2*}

Abstract

Background: Tumefactive demyelinating lesions are a rare manifestation of multiple sclerosis (MS). Differential diagnosis of such space occupying lesions may not be straightforward and sometimes necessitate brain biopsy. Impaired cognition is the second most common clinical manifestation of tumefactive MS; however complex cognitive syndromes are unusual.

Case presentation: We report the case of a 30 year old woman who presented with Gerstmann's syndrome. MRI revealed a large heterogeneous contrast enhancing lesion in the left cerebral hemisphere. Intravenous corticosteroids did not stop disease progression. A tumour or cerebral lymphoma was suspected, however brain biopsy confirmed inflammatory demyelination. Following diagnosis of tumefactive MS treatment with natalizumab effectively suppressed disease activity.

Conclusions: The case highlights the need for clinicians, radiologists and surgeons to appreciate the heterogeneous presentation of tumefactive MS. Early brain biopsy facilitates rapid diagnosis and management. Treatment with natalizumab may be useful in cases of tumefactive demyelination where additional evidence supports a diagnosis of relapsing MS.

Keywords: Gerstmann's syndrome, Tumefactive MS, Demyelination, Aphasia, Agnosia, Left-right disorientation, Dyscalculia, Natalizumab

Background

Gerstmann's syndrome is a rare disorder resulting from damage to the angular gyrus of the dominant parietal lobe leading to dysgraphia, dyscalculia, finger agnosia and left-right disorientation [1]. In adults this syndrome is usually seen after stroke. In younger patients inflammation, malignancy and abscesses need to be considered [2].

Case presentation

A 30 year old, right-handed woman was admitted with a two week history of word finding difficulties. There was

subtle expressive and receptive dysphasia alongside acalculia, agraphia, finger agnosia and left-right disorientation (Additional file 1), and right-sided homonymous hemianopia.

Magnetic resonance imaging (MRI) of the head demonstrated a large heterogeneous lesion associated with focal cystic changes in the left occipito-temporal lobes with partial restriction on diffusion weighted MRI (DWI) and heterogeneous gadolinium enhancement (Figure 1A-G). No spinal cord lesions were detected. Long echo time proton MR spectroscopy (MRS) of the lesion revealed an n-acetyl aspartate (NAA)/creatine (Cr) ratio of 1.17, a choline (Cho)/Cr ratio of 2.64 and an inverted lactate doublet curve (Figure 1R). Cerebrospinal fluid (CSF) analysis showed normal cell count (white cells <1, red cells <1), protein of 0.39 g/L, IgG of 21 mg/L, negative microbiology screen,

* Correspondence: k.schmierer@qmul.ac.uk

[†]Equal contributors

¹Blizard Institute, Barts and The London School of Medicine & Dentistry, Queen Mary, University of London, London, UK

²Department of Neurology, Barts Health NHS Trust, The Royal London Hospital, London, UK

Full list of author information is available at the end of the article

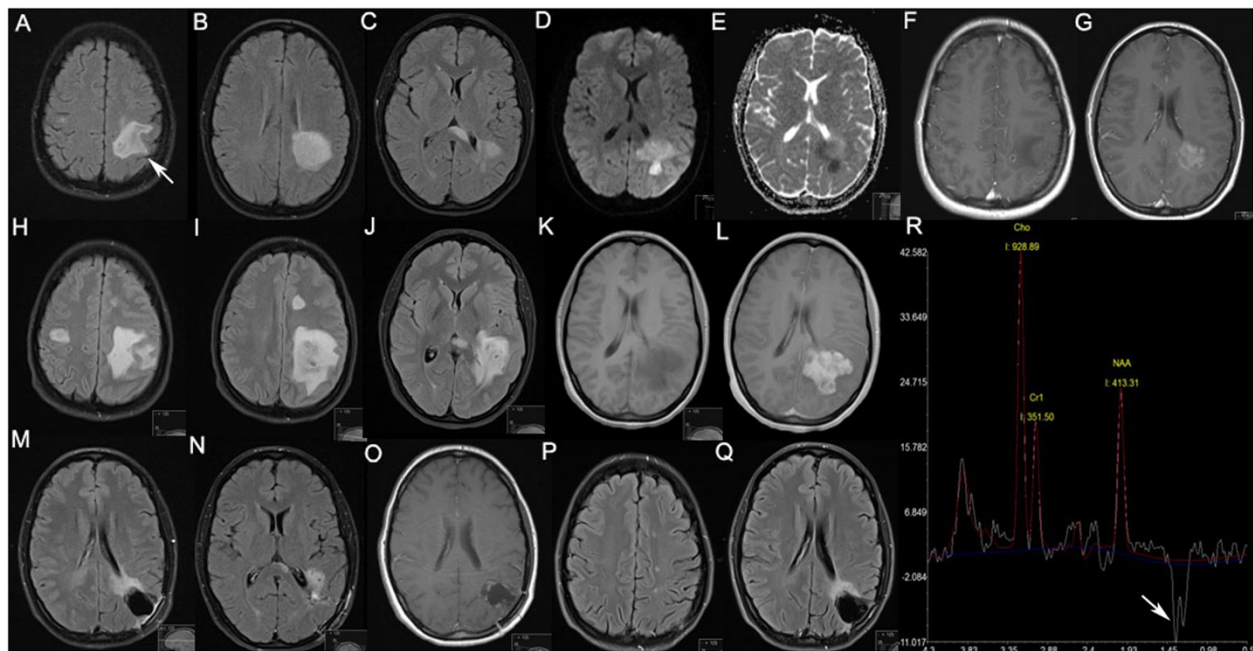


Figure 1 Axial MRI and MR spectroscopy data acquired at 3 Tesla in a 30 year old woman with tumefactive MS. Techniques used were fluid-attenuated inversion recovery (FLAIR; **A-C, H-J, P, Q**), diffusion weighted imaging (DWI; **D**) and apparent diffusion coefficient (ADC; **E**) maps, T₁ before (**F, K**) and after administration of gadolinium contrast (**G, L, O**), respectively. At presentation (**A-G**), FLAIR showed a large area of high signal in the left occipito-temporal region including the angular gyrus (arrow in **A**) and extending to the genu of the corpus callosum (**A-C**), while DWI and ADC maps showed partially restricted diffusion (**D, E**). Significant enhancement occurs after injection of gadolinium (**G**). Two weeks after presentation (**H-L**) FLAIR (**H-J**) showed increase in size of the index lesion, and three additional lesions, two in the frontal lobes (**H, I**) and one in the left occipital lobe (data not shown). All four lesions enhanced after application of gadolinium (only index lesion shown in **L**). Following brain biopsy, and four weeks after the first natalizumab infusion (**M-O**), there is significant reduction in size of the index lesion with evidence of post-surgical cavity and minimal residual gadolinium enhancement (**O**). Fourteen months after first presentation, and after 13 courses of natalizumab, no evidence of disease activity was detected (**P, Q**). Long echo MR spectroscopy of the tumefactive lesion at presentation revealed significantly reduced NAA/Cr ratio, increased Cho/Cr ratio and an inverted lactate doublet curve (arrow) (**R**).

however oligo-clonal bands predominantly in CSF compared to serum.

She was treated with intravenous (IV) methylprednisolone (MP), 1 g daily for three consecutive days with no clinical effect. Two weeks later the patient developed severe headache with intractable vomiting. Repeat MRI head revealed increase in size of the previously detected lesion and three new lesions (Figure 1H-L).

Given the diagnostic uncertainty – disease progression despite treatment with IVMP – needle biopsy was undertaken of the large left parietal lesion. The biopsy (Figure 2A-H) demonstrated frequent perivascular cuffs of T lymphocytes, macrophages and fewer B lymphocytes. Sheets of macrophages with foamy cytoplasm were evident in the neural parenchyma admixed with frequent GFAP positive reactive appearing astrocytes many of which showed abundant cytoplasm and peripherally placed nuclei (inlet in D). Occasional Creutzfeldt cells (inlet in E) were also identified, which is a characteristic albeit not specific feature of inflammatory demyelination. Visible on haematoxylin-eosin stained section and further highlighted on luxol fast blue special stain for

myelin was the relatively sharp margin between well-myelinated areas and regions with near complete absence of myelin. Axons, however, were well-preserved throughout. Furthermore, immunostaining for mutant isocitrate dehydrogenase 1 protein harbouring R132H mutation, which is present in a large proportion of diffuse gliomas [3], was negative in the whole specimen. Hence, there was no evidence of underlying glial neoplasm. In addition, neither T lymphocytes nor B lymphocytes showed cytological atypia thereby providing no support for a neoplastic lymphoid proliferation. The Ki67 proliferation index was mildly increased in keeping with reactive proliferation of the macrophages within the lesion.

Following histological confirmation of demyelination, and six weeks after first presentation, treatment with natalizumab 300 mg IV once every four weeks was started. As part of her peri-operative care, she was also given oral dexamethasone, initially in a dose of 4 mg bd, tapered in steps of 1 mg bd every two weeks. The last dose of dexamethasone was taken one week prior to her first follow-up MRI (Figure 1M-O) four weeks after

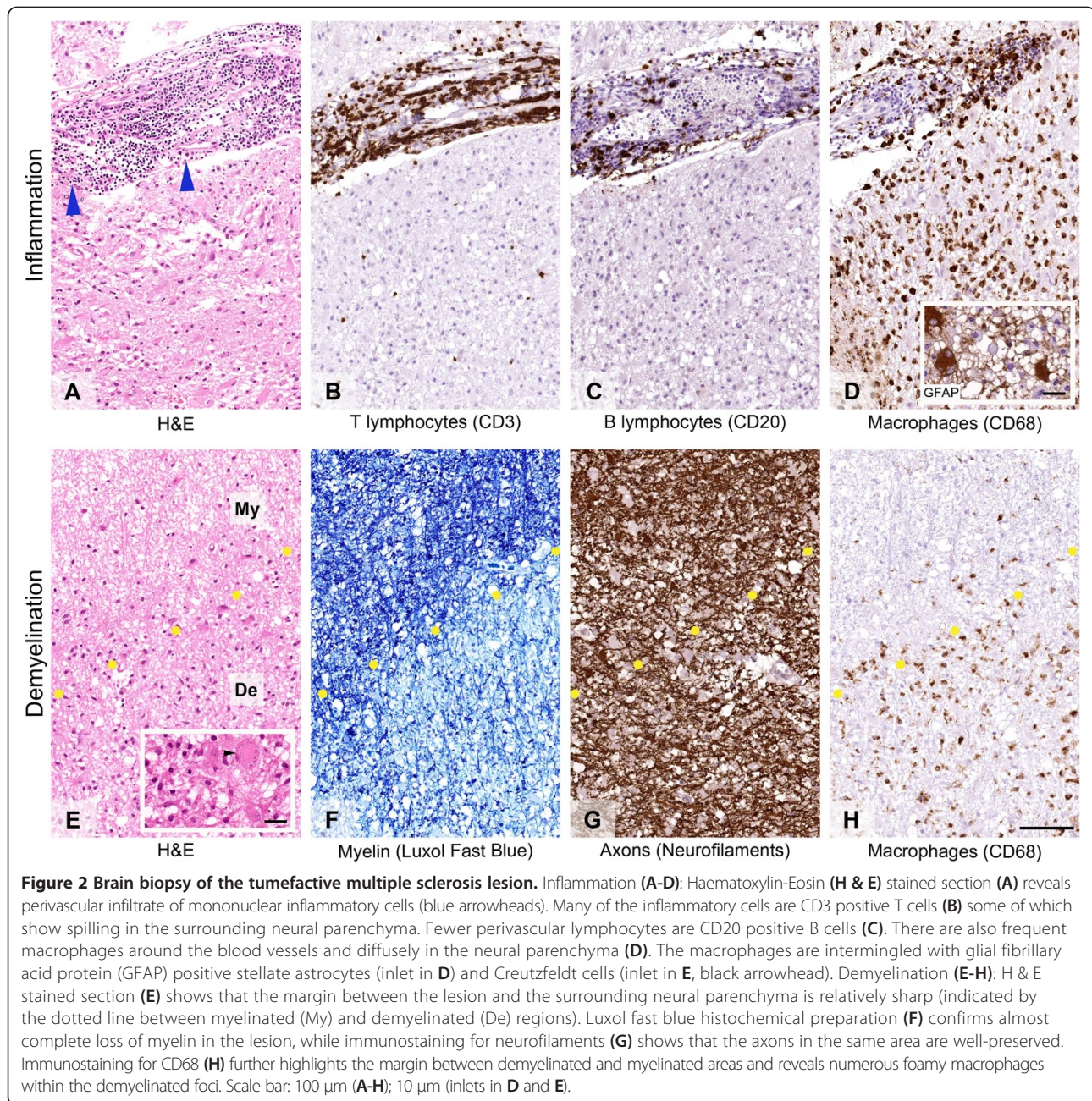


Figure 2 Brain biopsy of the tumefactive multiple sclerosis lesion. Inflammation (A-D): Haematoxylin-Eosin (H & E) stained section (A) reveals perivascular infiltrate of mononuclear inflammatory cells (blue arrowheads). Many of the inflammatory cells are CD3 positive T cells (B) some of which show spilling in the surrounding neural parenchyma. Fewer perivascular lymphocytes are CD20 positive B cells (C). There are also frequent macrophages around the blood vessels and diffusely in the neural parenchyma (D). The macrophages are intermingled with glial fibrillary acid protein (GFAP) positive stellate astrocytes (inlet in D) and Creutzfeldt cells (inlet in E, black arrowhead). Demyelination (E-H): H & E stained section (E) shows that the margin between the lesion and the surrounding neural parenchyma is relatively sharp (indicated by the dotted line between myelinated (My) and demyelinated (De) regions). Luxol fast blue histochemical preparation (F) confirms almost complete loss of myelin in the lesion, while immunostaining for neurofilaments (G) shows that the axons in the same area are well-preserved. Immunostaining for CD68 (H) further highlights the margin between demyelinated and myelinated areas and reveals numerous foamy macrophages within the demyelinated foci. Scale bar: 100 µm (A-H); 10 µm (inlets in D and E).

commencing natalizumab. At this time point improvement in language fluency and content was recorded, underpinned by MRI evidence of reduction in size of all lesions, and no new lesions (Figure 1M,N). After the fourth natalizumab infusion mini mental state examination score was 27/30 (pre-treatment score = 18) and Addenbrooke's cognitive examination (ACE-R) score 82/100 (pre-treatment score = 61). The second video illustrates the improvement of the patient's cognitive function (Additional file 2). No further relapses were observed after 16 months of clinical follow-up and 14 months after commencing natalizumab treatment (MRI Figure 1O-Q). However,

two complex-partial epileptic seizures occurred six and eight months after disease onset. After starting treatment with lamotrigine 25 mg bd no further seizures occurred.

Conclusion

Severe cognitive impairment is unusual at presentation of MS, and alternative causes need to be ruled out [2].

Gerstmann's syndrome has been reported in highly active relapsing-remitting MS in combination with other cognitive deficits [4]. In a large series of pathologically confirmed tumefactive MS cognitive abnormalities were found to be frequent (43% in 168 patients) with higher

cognitive involvement (aphasia, apraxia and agnosia) in 25% of cases. However, these cases were polysymptomatic [5]. Isolated lesions causing a specific cognitive syndrome such as in our case are exceptionally rare.

In most instances of demyelination, the associated clinical picture, MRI appearances, and CSF findings are sufficient to make a diagnosis. Despite the presence of oligo-clonal bands predominant in the CSF, however, the clinical deterioration and lack of treatment response to high-dose i.v. steroids associated with an increase in size of the tumefactive lesion and the occurrence of additional brain lesions prompted us to obtain a brain biopsy.

DWI, which provides estimates of water diffusion in biologic tissues, can be used in the assessment of tumours. Diffusion within a neoplasm is a marker of its cellularity as cells constitute a barrier to diffusion. As CNS lymphomas are highly cellular tumours, diffusion is restricted, making them appear hyper-intense on DWI and hypo-intense on apparent diffusion coefficient (ADC) maps [6]. However, large tumefactive lesions, such as in our case, may be indistinguishable from neoplasms as both can lead to mass effect/oedema, a hypo-intense rim on T₂ weighted scans, venular enhancement, peripheral restriction on DWI, and a variable degree of ring-enhancement [7]. Clinical deterioration and rapid enlargement of the tumefactive lesion in our case, with restricted diffusion despite IVMP treatment, confounded the diagnosis of MS and underpinned the need for biopsy to exclude primary CNS lymphoma.

The findings on proton MRS of an NAA/Cr ratio well below normal may be indicative of axonal dysfunction or loss whilst the significantly increased Cho/Cr ratio suggested increased cell-membrane metabolism. However, these findings, as well as the 'inverted doublet' shape of the lactate curve may occur in tumefactive demyelinating lesions and tumours alike [8]. Thus, like DWI, MRS did not enable a non-invasive diagnosis in our case.

The evidence regarding prognosis and disease course of tumefactive MS remains controversial. Lesions larger than 5cm have been reported as being associated with a higher disability at follow-up [5], and patients who develop clinically definite MS after tumefactive presentation appeared to have a more aggressive disease course [9]. On the other hand, Wattamwar and co-workers described a series of 14 patients who made an excellent recovery from their large demyelinating lesions [10].

There is no standard immunomodulatory treatment for people with tumefactive MS. Treatment choices include IVMP, β -Interferons, plasma exchange (PLEX), rituximab and natalizumab [4,11-14]. In their recent review Hardy *et al.* proposed an algorithm for the acute management using IVMP and/or PLEX followed by disease modification using immunomodulatory agents [15]. The

disease course in our patient suggests excellent treatment response to natalizumab, further supporting the diagnosis of relapsing MS (with tumefactive lesion leading to first presentation). Trial evidence shows natalizumab may be effective within weeks after a single infusion. In a study comparing two doses of natalizumab (3 mg and 6 mg/kilogram body weight) with placebo, Miller *et al.* reported significant reduction of gadolinium-enhancing lesions four weeks after their first infusion of either dose [16]. However, despite the initial lack of treatment response to IVMP in our case, a subsequent corroborating effect of peri-operative dexamethasone on the clinical course and resolution of lesions cannot be excluded. Of note, tumefactive lesions have also been reported in the context of switching immunomodulatory therapy in people with MS as described following a switch to fingolimod from natalizumab [17] and IFN [18], respectively. An inhibitory effect of fingolimod on the regulatory T cell pool has been hypothesized as a potential cause, though the evidence is so far inconclusive [19].

In summary, we present video, MRI and pathological evidence of a case of tumefactive MS which posed a diagnostic dilemma due to its atypical clinical and radiological presentation, and lack of response to steroid treatment. Clinicians, radiologists and surgeons need to appreciate the heterogeneous presentation of this disorder, and an early brain biopsy is often necessary for rapid diagnosis and management. Treatment with natalizumab may be useful in cases of tumefactive demyelination where additional evidence supports a diagnosis of relapsing MS.

Patient consent

We confirm that a signed consent from the patient has been obtained for the publication of this report, the images and videos.

Additional files

Additional file 1: Video 1. Cognitive assessment of the patient before treatment.

Additional file 2: Video 2. Cognitive assessment of the patient after three months treatment. Dysphasia, dysgraphia, finger agnosia and left-right disorientation are shown (video 1), which have subsided on subsequent assessment (video 2).

Competing interest

KS is a PI on trials sponsored by Novartis and Roche. He has received speaking honoraria from Merck-Serono and Novartis, served on advisory boards for Biogen, Merck Inc, Merck-Serono, Novartis and Teva, and has received grant support from Novartis.

Authors' contributions

SG wrote the draft manuscript and prepared the videos. ZJ provided the histological analysis, prepared pathology images and was involved in drafting of the manuscript. KPB and SaG prepared MR images and were involved in drafting the manuscript. KS initiated the study, reviewed and edited the manuscript, and approved the final version. All authors read and approved the final manuscript.

Acknowledgements

We acknowledge the expert advice by consultant neuropathologists Professor Silvia Marino, Professor Tamas Revesz and Professor Sebastian Brandner. KS has been supported by a Higher Education Funding Council for England (HEFCE) Clinical Senior Lectureship.

Author details

¹Blizard Institute, Barts and The London School of Medicine & Dentistry, Queen Mary, University of London, London, UK. ²Department of Neurology, Barts Health NHS Trust, The Royal London Hospital, London, UK. ³Division of Neuropathology, UCLH Foundation Trust, The National Hospital for Neurology & Neurosurgery, Queen Square, London, UK. ⁴Department of Neuroradiology, Barts Health NHS Trust, The Royal London Hospital, London, UK.

Received: 10 October 2013 Accepted: 17 March 2014

Published: 2 April 2014

References

1. Clark C, Howard R, Rosser M, Shorvon S: *Neurology: A Queen Square Textbook*. 1st edition. UK: Wiley-Blackwell; 2009.
2. Wallner-Blazek M, Rovira A, Fillipp M, Rocca MA, Miller DH, Schmierer K, Frederiksen J, Gass A, Gama H, Tilbery CP, Rocha AJ, Flores J, Barkhof F, Seewann A, Palace J, Youssry T, Montalban X, Enzinger C, Fazekas F: **Atypical idiopathic inflammatory demyelinating lesions: prognostic implications and relation to multiple sclerosis.** *J Neurol* 2013, **260**(8):2016–2022.
3. Hartmann C, Meyer J, Bals J, Capper D, Mueller W, Christians A, Felsberg J, Wolter M, Mawrin C, Wick W, Weller M, Herold-Mende C, Unterberg A, Jeuken JW, Wesseling P, Reifenberger G, von Deimling A: **Type and frequency of IDH1 and IDH2 mutations are related to astrocytic and oligodendroglial differentiation and age: a study of 1,010 diffuse gliomas.** *Acta Neuropathol* 2009, **118**(4):469–474.
4. Ehrle N, Maarouf A, Chaunu MP, Sabbagh-Peignot S, Bakchine S: **Acquired and developmental Gerstmann syndrome. Illustration from a patient with multiple sclerosis.** *Revue neurologique* 2012, **168**(11):852–860.
5. Lucchinetti CF, Gavrilova RH, Metz I, Parisi JE, Scheithauer BW, Weigand S, Thomsen K, Mandrekar J, Altintas A, Erickson BJ, König F, Giannini C, Lassmann H, Linbo L, Pittcock SJ, Brück W: **Clinical and radiographic spectrum of pathologically confirmed tumefactive multiple sclerosis.** *Brain* 2008, **131**(Pt 7):1759–1775.
6. Haldorsen IS, Espeland A, Larsson EM: **Central nervous system lymphoma: characteristic findings on traditional and advanced imaging.** *AJNR Am J Neuroradiol* 2011, **32**(6):984–992.
7. Kiriya T, Kataoka H, Taoka T, Tonomura Y, Terashima M, Morikawa M, Tanizawa E, Kawahara M, Furiya Y, Sugie K, Kichikawa K, Ueno S: **Characteristic neuroimaging in patients with tumefactive demyelinating lesions exceeding 30 mm.** *J Neuroimaging* 2011, **21**(2):e69–e77.
8. Saindane AM, Cha S, Law M, Xue X, Knopp EA, Zagzag D: **Proton MR spectroscopy of tumefactive demyelinating lesions.** *AJNR Am J Neuroradiol* 2002, **23**(8):1378–1386.
9. Selkirk SM, Shi J: **Relapsing-remitting tumefactive multiple sclerosis.** *Mult Scler* 2005, **11**(6):731–734.
10. Wattamwar PR, Baheti NN, Kesavadas C, Nair M, Radhakrishnan A: **Evolution and long term outcome in patients presenting with large demyelinating lesions as their first clinical event.** *J Neurol Sci* 2010, **297**(1–2):29–35.
11. Seifert CL, Wegner C, Sprenger T, Weber MS, Bruck W, Hemmer B, Sellner J: **Favourable response to plasma exchange in tumefactive CNS demyelination with delayed B-cell response.** *Mult Scler* 2012, **18**(7):1045–1049.
12. Launay M, Lebrun C, Giordana E, Chanalet S, Thomas P: **Clinical, radiographic, prognostic and therapeutic aspects of demyelinating disease with tumefactive demyelinating lesions.** *Rev Neurol* 2011, **167**(1):14–22.
13. Kalanie H, Harandi AA, Bakhshandehpour R, Heidari D: **Multiple Large Tumefactive MS Plaques in a Young Man: A Diagnostic Enigma and Therapeutic Challenge.** *Case reports in radiology* 2012, **2012**:363705.
14. Fan X, Mahta A, De Jager PL, Kesari S: **Rituximab for tumefactive inflammatory demyelination: a case report.** *Clin Neurol Neurosurg* 2012, **114**(10):1326–1328.
15. Hardy TA, Chataway J: **Tumefactive demyelination: an approach to diagnosis and management.** *J Neurol Neurosurg Psychiatry* 2013, **84**(9):1047–1053.
16. Miller DH, Khan OA, Sheremata WA, Blumhardt LD, Rice GP, Libonati MA, Willmer-Hulme AJ, Dalton CM, Miszkiel KA, O'Connor PW: **A controlled trial**

of natalizumab for relapsing multiple sclerosis. *N Engl J Med* 2003, **348**(1):15–23.

17. Jander S, Turowski B, Kieseier BC, Hartung HP: **Emerging tumefactive multiple sclerosis after switching therapy from natalizumab to fingolimod.** *Mult Scler* 2012, **18**(11):1650–1652.
18. Castrop F, Kowarik MC, Albrecht H, Krause M, Haslinger B, Zimmer C, Berthele A, Hemmer B: **Severe multiple sclerosis relapse under fingolimod therapy: incident or coincidence?** *Neurology* 2012, **78**(12):928–930.
19. Meluzinova E, Bojar M, Havrdova E, Liskova P, Kappos L: **Severe multiple sclerosis relapse under fingolimod therapy.** *Mult Scler* 2012, **18**(4 suppl):459.

doi:10.1186/1471-2377-14-68

Cite this article as: Gnanapavan et al.: A rare presentation of atypical demyelination: tumefactive multiple sclerosis causing Gerstmann's syndrome. *BMC Neurology* 2014 **14**:68.

Submit your next manuscript to BioMed Central and take full advantage of:

- Convenient online submission
- Thorough peer review
- No space constraints or color figure charges
- Immediate publication on acceptance
- Inclusion in PubMed, CAS, Scopus and Google Scholar
- Research which is freely available for redistribution

Submit your manuscript at
www.biomedcentral.com/submit

